

**Surilana Madding (ET)** Suri DBr 152910

With Accoyo genetics from his sire, this striking dark brown suri has excellent lustre, soft handle and a pleasant nature.

First fleece: 18.3 $\mu$ , 3.7 SD, 20.3 CV

**Robinwood Alpacas**

- Karen & Alastair Smedley
- (02) 6656 9403
- MNC LAN



**Cedar House Moonflute** Suri SW 62313

Proven homozygous. Very large frame with beautiful conformation. Son of Peruvian Amador, grandsire Senator.

Mating fee \$770

**Shangrilah Alpacas**

- Deb Smith & Dave Cooper
- 0412 010 743
- NE LAN



**Alpacandes Temuco ET** Huacaya SLF 116202

Dense, fine male.

\$250 mating fee + \$250 A4.

Mobile by arrangement

**Sanchavel**

- Sandra & Charlie Vella
- 6564 2046
- MNC LAN



**Elysion Mantovani** Huacaya MG 94471

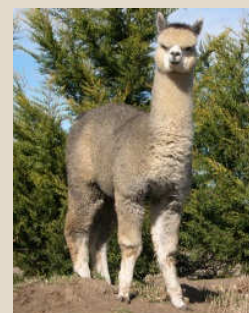
Fine, soft, dense, bold crimp. Calm, Rising Son genetics. 7 blue ribbons. Full description on alpacaseller. Mating Fee \$660 (Co-owned El Prado)

**Sapa Alpacas**

- Nigel Thompson 0439 475 493

**El Prado Alpacas**

- Paul Thibault 4930 6178
- Hunter LAN



**Sapa Tuscano Alphonso** Roan 165407

Fine (<20u, 2010) low CV, soft, lustrous, dense & long staple length 99.8% CF. Scud & Accoyo genetics.

Matings From \$330

**Sapa Alpacas**

- Nigel Thompson
- 0439 475 493
- Hunter LAN



**El Prado Ferrero** Dark Fawn 152522

Exceptionally soft. 2nd 2010 Nationals. Iceman genetics  
Matings From \$330 on farm (A4 extra)

**Sapa Alpacas**

- Nigel Thompson
- 0439 475 493
- Hunter LAN



**El Prado Zen** Solid White 138776

Uniform, soft, lustrous, holding fineness. Ledgers Dream genetics.

Matings From \$330 on farm (A4 extra)

**Sapa Alpacas**

- Nigel Thompson
- 0439 475 493
- Hunter LAN



**Kia Ora View Temptation** Huacaya Fawn 42738

A true huacaya macho with superb frame & fleece. Producing stunning cria in all colours. Jolimont Cassius/ Sculptor Genetics

Mating Fee \$600

**Green Gully Alpacas**

- Cathy & Noel Reid
- 6778 7449



**Longueville Park Brigalow** Huacaya SBLK 103359

Stylish black with advanced fleece characteristics, fineness and uniformity.

Mating Fee \$600

**Green Gully Alpacas**

- Cathy & Noel Reid
- 6778 7449
- NE LAN



**Wyona Centinal II** Huacaya SBLK 82461

Blue black male with lustrous, fine, dense fleece. 2009 stat 21.5u SD 5.1 CV 23.9 CF 93%.

\$550 on farm or mobile

**Lindisfarne Alpacas**

- Lindy Brown
- 6566 0439
- MNC LAN



**Morning Star Red Cloud** Huacaya RG 133465

Outstanding young male with sought after genetics inc. Forest Glen Platinum, Hot Chilli, El Dorado, Rising Sun & Minti. 2010 Fleece: 19u (3yr old). \$550 on farm, mobiles by arrangement, multiple discounts.

**Kerranda Alpacas**

- Lindsay & Kerrie Rapley
- 6569 9186 MNC LAN



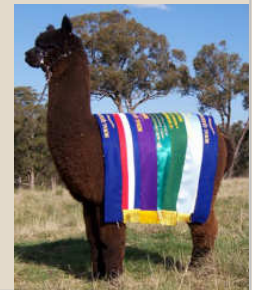
**Koorana Park Aragorn** Huacaya SDB 109094

Quite the ribbon winner, Aragorn is well built. Crias now on the ground to view. 2010 Fleece: 25.5u (5yr old).

\$450 on farm, mobiles by arrangement, multiple discounts

**Kerranda Alpacas**

- Lindsay & Kerrie Rapley
- 6569 9186
- MNC LAN



**Alani Morgan** Huacaya SLF 129397

Ultrafine male with an amazingly soft, fine bundling fleece. Crias are extremely impressive. 3rd Fleece 17.7u, SD 3.4, CF 99.8%. \$550 on farm, mobiles by arrangement.

**Alani Alpacas**

- Dot Ware
- 6566 5433
- MNC LAN



**Warralinga Jamaica** Huacaya SMB 54117

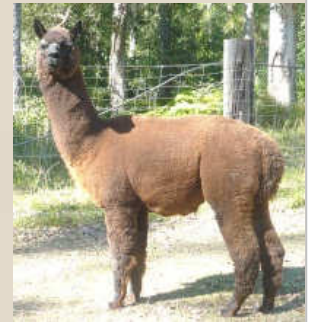
Well proportioned male with, dense fleece

On Farm matings \$250 + \$250 A4

Mobile by arrangement

**Congarrini Downs Alpacas**

- Jo-Anne & John Gonsalves
- 6564 7887
- MNC LAN



**Glen Waverly Joshua** Huacaya SMF 83069

Excellent frame male - suitable to put over lower quality females

\$500.00 mating fee

**Glen Waverly**

- Betty Whitten
- 6732 3314
- NE LAN



**Chachani Mohica** Huacaya SW 107910

SRS® Recommended Male - High fibre, density & length. High crimp amplitude.

\$600.00 Mating fee

**Glen Waverly**

- Betty Whitten
- 6732 3314
- NE LAN



**Vanity Fair Desert Inca** Suri DF 85494

A classic suri - fine pencilling fleece evenly spread & excellent lustre Fleece stats. 18.3u, 3.2 SD, 17.7 CV 100% CF  
2nd fleece '08. 21u, 4.4 SD, 20.8 CV,  
96.7% CF 3rd fleece '09

**Valinor Park**

- Malcolm & Rhonda Perry
- 4938 0023
- **Hunter LAN**



**Eaglevale Cognac** SMF Huacaya 77585

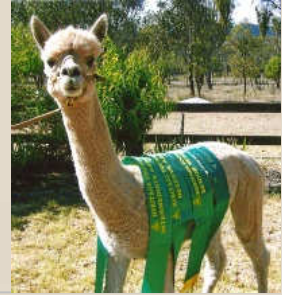
Mulitple broad ribbon winner at Toowoomba Shows

2009 Fleece stats 19.02su 2010 22.4su

on farm mating \$500. noGST

**Eaglevale Alpacas**

- Alan & Dawn Bicknell
- 6775 5585
- **NE LAN**



**Koorana Park Polaris** Huacaya White 43920

DOB: 9.6.2004

Well natured white male, son of Jollimont Cassius

Matings: Price on application

**Boundary Fig**

- Debra Farley
- 6761 8184
- **NE LAN**



Prices shown and availability reflect the information provided by the breeders only.

Animals listed on the register must be registered to a regional member and DNA Certified.

Breeders are responsible for ensuring that the animals on this register are available and meet the conditions above.

The region and the website editors only publish information provided to them and carry no responsibility as to its accuracy.

**ALWAYS CONTACT THE BREEDER**